

The Alice Apron Pattern

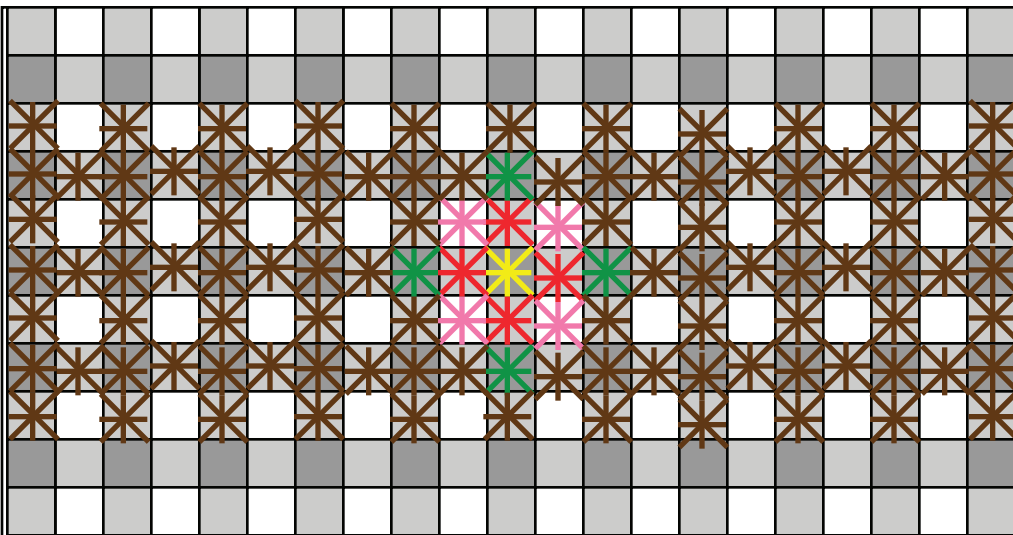
4" x 44" strip for waistband

40" x 26" rectangle for the apron

Cut the waistband and apron front pieces from your choice of 1/4" gingham cotton using the measurements provided.

Use the embroidery pattern on the pocket to stitch the detail onto a piece of gingham before cutting out the pocket with the pattern provided.

Add 1/2" seam allowance to the pattern before cutting



The Alice Apron Pocket Pattern
onelittleminuteblog.com



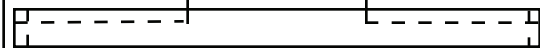
Fold seam allowance under on pocket and stitch it on 4" from the top and 6" from the right side of the apron front.



Hem both short sides of the apron front with a 1/2" hem. Hem the bottom of the apron front with a 2.5" hem.



Gather the top edge of the apron to 20" wide.



Fold the waistband in half length wise and press flat. Mark 20" in the center of the open side with pins. Stitch around the edge on either side, ending at the pins, leaving a 20" hole in the waistband.



Turn the waistband right side out and press. Insert the gathered top of the apron into the waistband hole, pin in place, and topstitch together.

The Alice Apron Embroidery Pattern

